

# Camomile Flower CO<sub>2</sub>-to extract (integr)

## Type no. 019.001

contains all CO<sub>2</sub>-soluble lipophilic components



### Raw material:

*Chamomilla recutita* - Flowers

### Production:

By supercritical fluid extraction with natural carbon dioxide, no inorganic salts, no solvent residues, no heavy metals, no reproducible microorganisms [1].

### Extract:

Green-brown colour, liquid at 40°C, fine chamomile-like smell.

### D/E - ratio:

19 - 26 kg raw material yield 1 kg product.

### Declaration:

INCI-Name (CTFA): Chamomilla Recutita (Matricaria) Flower Extract, CAS-No. 84082-60-0, EINECS-No. 282-006-5

### Transport data:

No dangerous good in the sense of the transport regulations.

### Ingredients:

7 - 17 % essential oil with 20 - 45 % bisabolol and 5 - 20 % bisabolol oxides in addition 1,0 - 3,0 % matricine (analysed as chamazulene), cis - and trans-en-yn-dicycloether, spathulenol, herniarine, waxes and non-volatile components. The labile matricine is not decomposed at the CO<sub>2</sub>-extraction to blue coloured chamazulene with inferior anti-inflammatory effect [2].

### Application:

Antiphlogisticum, spasmolyticum, carminativum [3], in skin care products and in natural remedies.

Dosage: 0,1 - 0,3 %

### Naturalness:

The product is manufactured from the named raw material. It contains no additives and no other technical adjuncts, it is not blended and not formulated. The product is 100 % natural and corresponds to the EC Flavouring Regulation No. 1334/2008 for flavouring preparations.

### Stability:

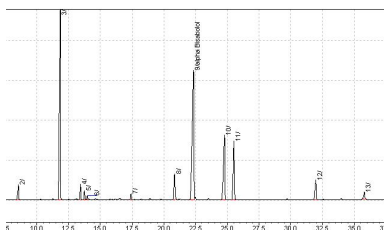
Unopened container under cool and dry storage conditions and exclusion of light at least 5 years.

[1] Manninen P., Häivälä E., Sarimo S., Kallio H. : Z. Lebens Unters Forsch A (1997) 204: 202-205

[2] Planta Med 56 (1990), 657

[3] Hempel, B., Hirschelmann, R. : DAZ 138 (1998), 4237

These data are given for customer's information only to the best of our knowledge but under exemption of liability especially regarding infringement of or prejudice to third party rights through the use of this product. This information is not a substitute for prior tests demonstrating the suitability of the product for the intended use. Users are responsible for ensuring the compliance with the applicable legislation. The concentrated FLAVEX extracts are raw materials for product formulation. Hence they are not intended for direct consumption in food and for undiluted topical application in cosmetics, perfumery and aromatherapy. Keep away from children.



FLAVEX Naturextrakte GmbH Nordstraße 7 D-66780 Rehlingen  
Tel. +49 - (0) 68 35 - 91 95-0 Fax +49 - (0) 68 35 - 91 95-95  
Internet www.flavex.com E-Mail info@flavex.com



# CO<sub>2</sub> EXTRACTION